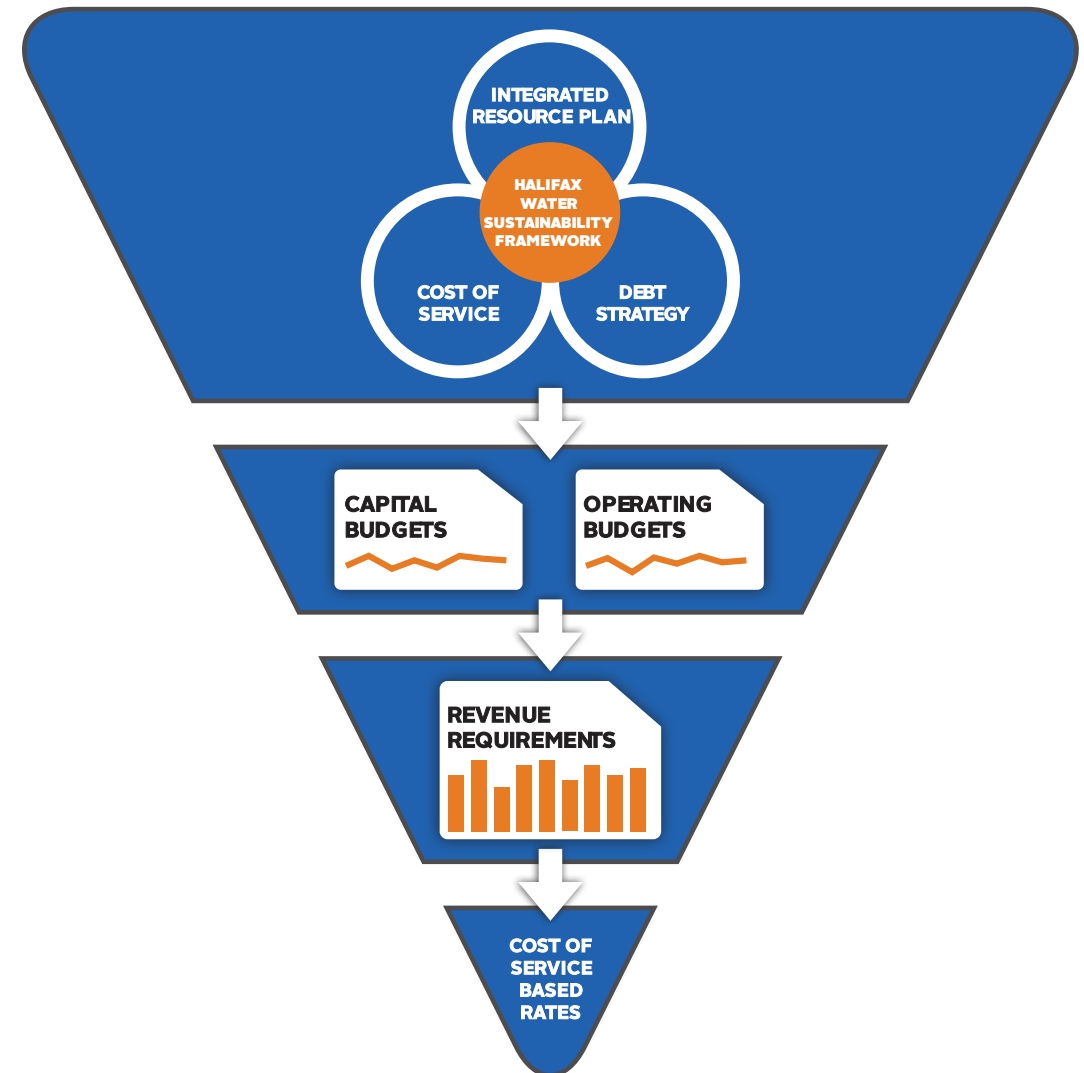


Meeting the needs of a growing municipality

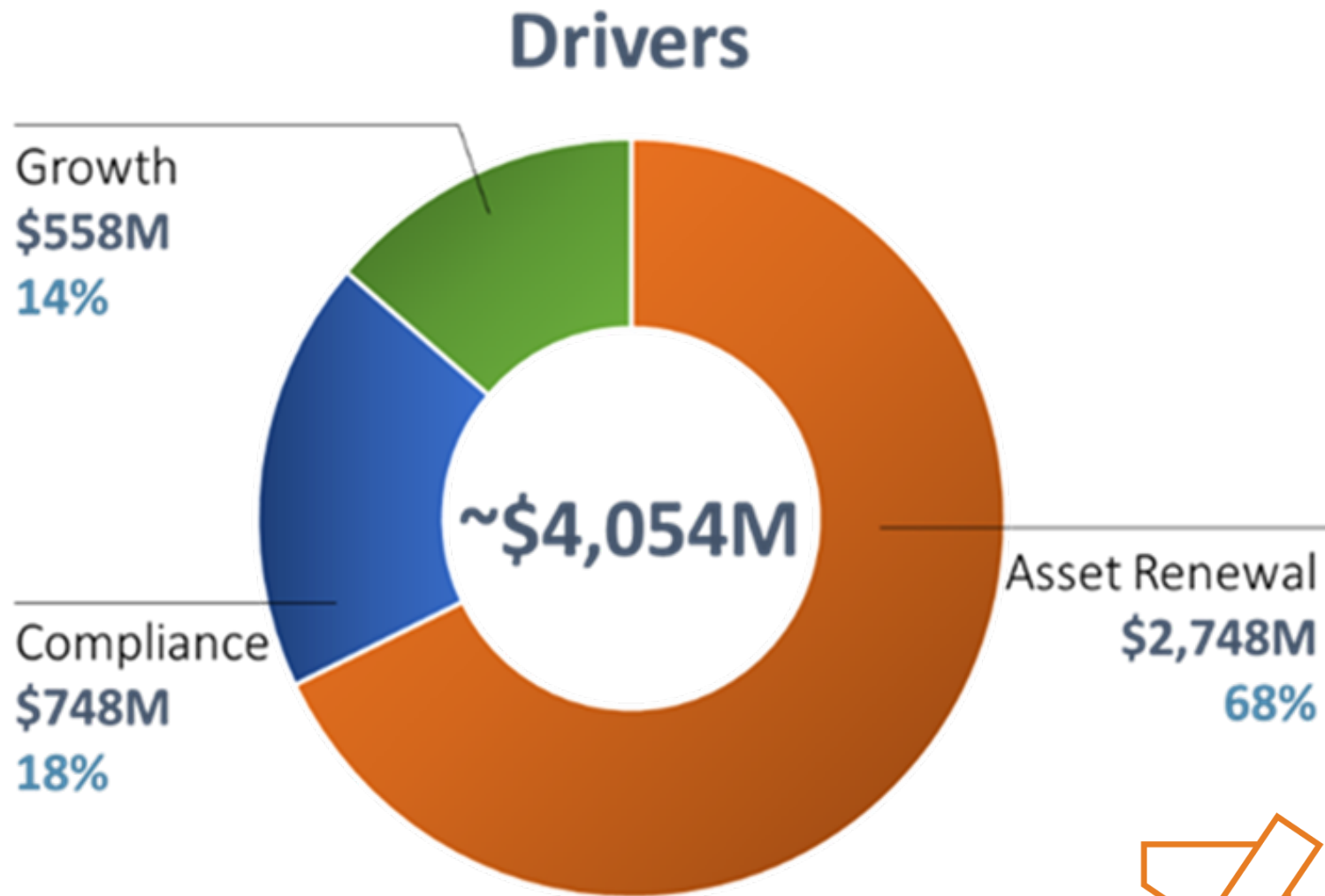
- Halifax Water:
 - An integrated water utility providing Water, Wastewater and Stormwater Services
 - A regulated (by the NSUARB) cost of service utility, operating on a “break even” basis
- We serve:
 - 106,000 customers
 - a population of 383,000
- Growth:
 - Our ability to meet the increasing demands of growth, regulatory compliance and aging infrastructure must align with the growth of Halifax
 - Halifax is one of the fastest-growing cities in Canada.
 - 26% increase in the past 5 years)



Integrated, long-range planning

Integrated Resource Plan 30-Year By Driver

(Based on 2019 IRP)



Halifax Water's Regional Development Charges

- A financing study in 2012 identified that Halifax Water's rates for water and wastewater service would triple by the end of the 30-year planning horizon, and Halifax Water would not have the ability to fund future infrastructure requirements.
- One of the recommendations was the development of charges to fund growth-related infrastructure requirements.
- In 2014, Halifax Water established the first Regional Development Charges (RDC). The charge was reassessed in 2019/20, and updated charges were approved in 2021.
- The 2021 update also included an enhanced deferral mechanism to assist affordable housing.



Regional Development Charge Rates

Water Regional Development Charge (all areas within HRM with water service.)

Type of Development	April 1, 2022
Single Unit Dwellings / Townhouses	\$1,791.07 / unit
Multiple Unit Dwellings	\$1,202.95 / unit
Industrial / Commercial / Institutional Buildings	\$ 8.84 / m ²

Wastewater Regional Development Charge (all areas within HRM with wastewater service.)

Type of Development	April 1, 2022
Single Unit Dwellings / Townhouses	\$ 5,710.01 / unit
Multiple Unit Dwellings	\$ 3,835.08 / unit
Industrial / Commercial / Institutional Buildings	\$ 28.18 / m ²

*An adjustment for CPI will be made annually to the RDC on April 1.



RDC Activities

Charge	2014-2020	2021	Expenditures	Balance
Water	\$3,689	\$3,583	\$3,730	\$3,004
Wastewater	\$67,648	\$18,413	\$23,356	\$63,788

RDC Funded Projects – Next Five Years	Project Cost	RDC Funding	RDC Spend
Main Upgrades - Churchill Drive Corridor	\$9,420	75%	\$7,065
Main Looping - Quinpool to Young	\$4,322	75%	\$3,242
Lucasville Twinning – Phase 2	\$9,964	100%	\$9,964
Connection – Bedford to Burnside	\$41,524	47%	\$18,900
Aerotech Reservoir	\$5,286	75%	\$3,965
Bayers & Kempt Sewer Separations	\$16,413	95%	\$15,592
Young to Harbour Sewer Separations	\$24,342	75%	\$18,256

All dollar figures are in thousands.

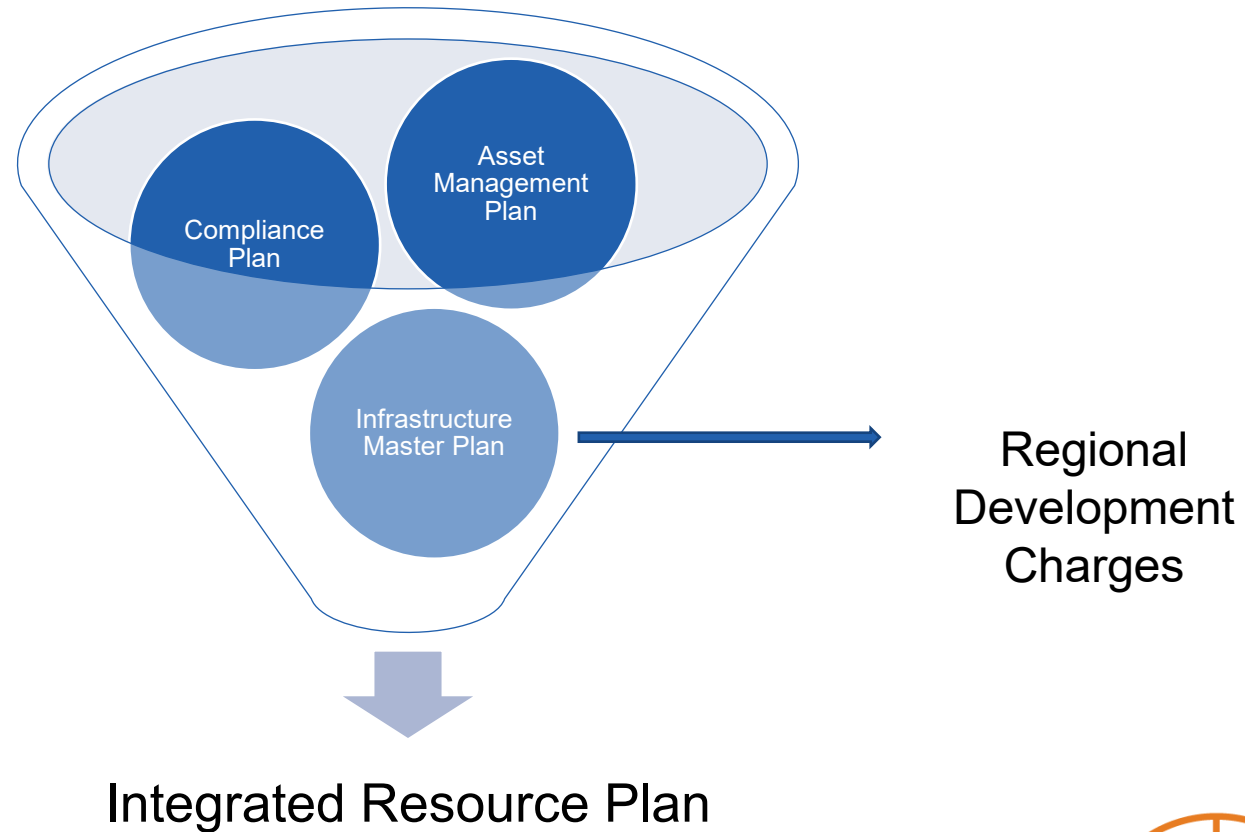


Halifax Water Programs

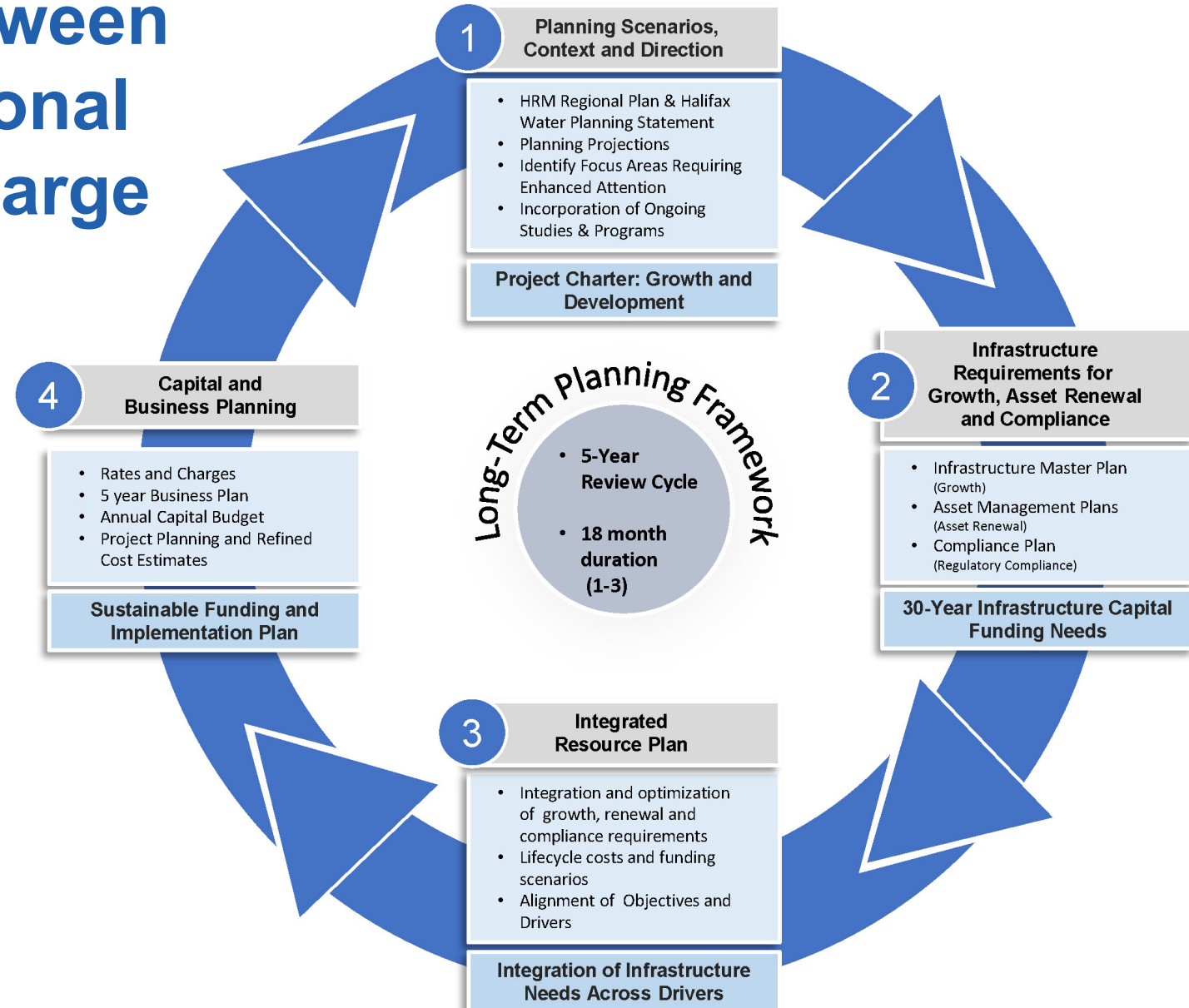


- Halifax Water programs & services that may be of interest to Industry Partners:
 - Stormwater Credit Program
 - Lead Service Line Replacement Program
 - Wastewater Rebate Program
 - Private Lateral Replacement Assistance Program
 - Customer Connect

Relationship between planning and the RDC



Relationship between Planning & Regional Development Charge



Long-Term Planning Framework