

September 18, 2020

Wet weather is coming. As a property owner how do you manage all the rainwater and rising groundwater levels? This stormwater is not permitted to enter into the Halifax Water wastewater system.

Inflow & Infiltration (I&I)

The wastewater system is designed to carry the flows from your toilets, sinks, showers, dishwashers and washing machines. When stormwater enters the wastewater system, either through direct connections (sump pumps, downspouts, foundation drains, etc.) or pipe defects (cracks and breaks), it is considered inflow and infiltration (I&I).

The added stormwater I&I causes increased flows that can overwhelm the wastewater system resulting in flooded basements or spills of raw sewage in your neighbourhood.

I&I Reduction Project

Halifax Water is performing I&I reduction projects throughout HRM, including your area. Repairs have been made to the public wastewater infrastructure in the street.

We now need you to assess your private property's stormwater drainage for I&I connections to the wastewater system. This could include sump pumps, downspouts and interior/exterior drains as well as damage to the wastewater pipe that connects your building to the system in the street. **Where I&I connections are found, please make repairs or modifications to redirect the stormwater.**

At a later date, pending COVID-19 limitations, Halifax Water will be performing mandatory property inspections to examine outside and inside your buildings. If I&I connections are found, you will be given a deadline to make repairs.

Public Webinar

We will be holding an online webinar on Tuesday, October 6, from 6:00 PM – 8:00 PM to further describe this project and provide examples of I&I issues to look for at your property. You can also ask questions during the webinar. To view the webinar, or to ask questions, please register at the link below:

halifaxwater.ca/project/hornes-road-area-inflow-infiltration-project

For those who cannot attend the webinar, it will be made available on the webpage shown above.

Project Contacts

Halifax Water
Inflow & Infiltration Team

inflow@halifaxwater.ca

Halifax Water
Customer Care Centre
Mon - Fri 8:00 AM - 8:00 PM
customer care@halifaxwater.ca
902-420-9287

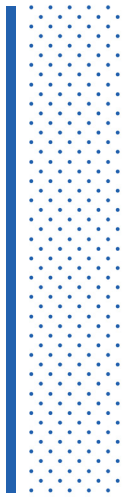
Learn more about Inflow & Infiltration: www.halifaxwater.ca/homeowner-responsibility

A decorative pattern of small blue dots arranged in a grid-like fashion, tapering off to the right.

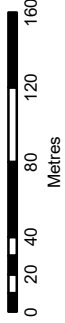
**STRAIGHT from
the SOURCE**

INFLOW & INFILTRATION REDUCTION PROJECT

HORNES ROAD AREA



Project Boundary



STRAIGHT from
the SOURCE

