

October 22, 2019

### Landscaping Work

Today, the landscaping contractor, Elmsdale Landscaping will be placing stakes in the ground where plants will be planted during the landscaping reinstatement work being completed in the project area.

Once stakes have been placed, **please do** take some time to consider the placement and feel free to relocate the stakes on your property as you desire. Please consider the location of the plants by Thursday, October 24<sup>th</sup>, as planting will begin soon after.

### Project Update - Weeks of October 21 & October 28

#### Section 1 (see project map)

##### Monday, Oct. 21 - Friday, Oct. 25

- Landscaping Reinstatement
- Fencing Reinstatement
- Street Reinstatement

##### Monday, Oct. 28 - Friday, Nov. 1

- Fencing Reinstatement
- Street Reinstatement
- Demobilize

#### Section 2 (see project map)

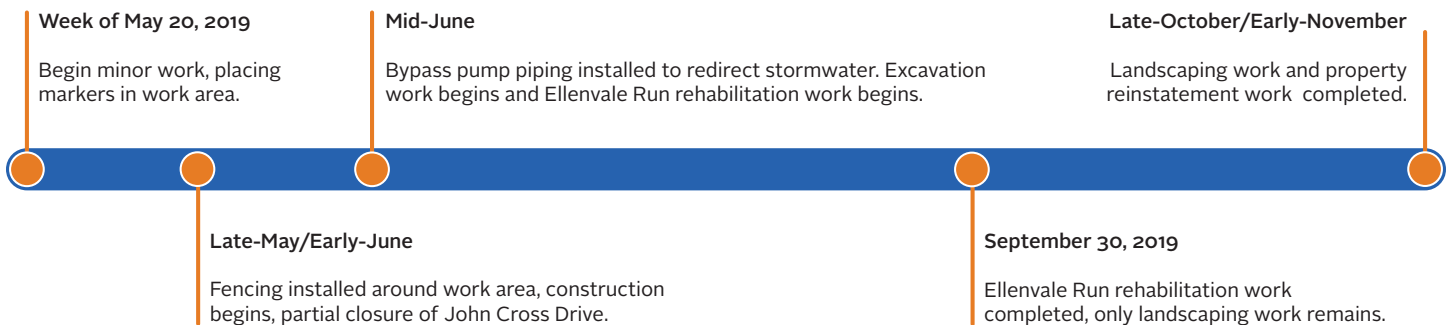
##### Monday, Oct. 21 - Friday, Oct. 25

- Landscaping Reinstatement
- Fencing Reinstatement
- Street Reinstatement

##### Monday, Oct. 28 - Friday, Nov. 1

- Fencing Reinstatement
- Street Reinstatement
- Demobilize

### Project Timeframe



### Thank You

Halifax Water appreciates how disruptive to traffic and daily routines construction work can be in communities such as this one. We appreciate your cooperation in allowing us to complete our work in such close proximity to your homes and for your patience throughout this project.

### Project Contacts

**Halifax Water**  
**Customer Care Centre**  
 Mon - Fri 8:00 AM - 8:00 PM  
 902-420-9287  
 customercare@halifaxwater.ca

**Peter Maynard, P.Eng**  
**Project Engineer**  
**Halifax Water**  
 902-478-7350  
 peterma@halifaxwater.ca

**Bryan Naugle**  
**President**  
**Brycon Construction**  
 902-880-2500  
 bryan@bryconconstruction.com

**Evan Teasdale, P.Eng**  
**Project Engineer**  
**DesignPoint Engineering**  
 902-832-5597  
 evan.teasdale@designpoint.ca

**For Project Information & Updates, visit:** [halifaxwater.ca/project/ellenvale-run-rehabilitation-project-phase-2](http://halifaxwater.ca/project/ellenvale-run-rehabilitation-project-phase-2)

**ELLENVALE RUN  
PHASE II  
DARTMOUTH**

**LEGEND**


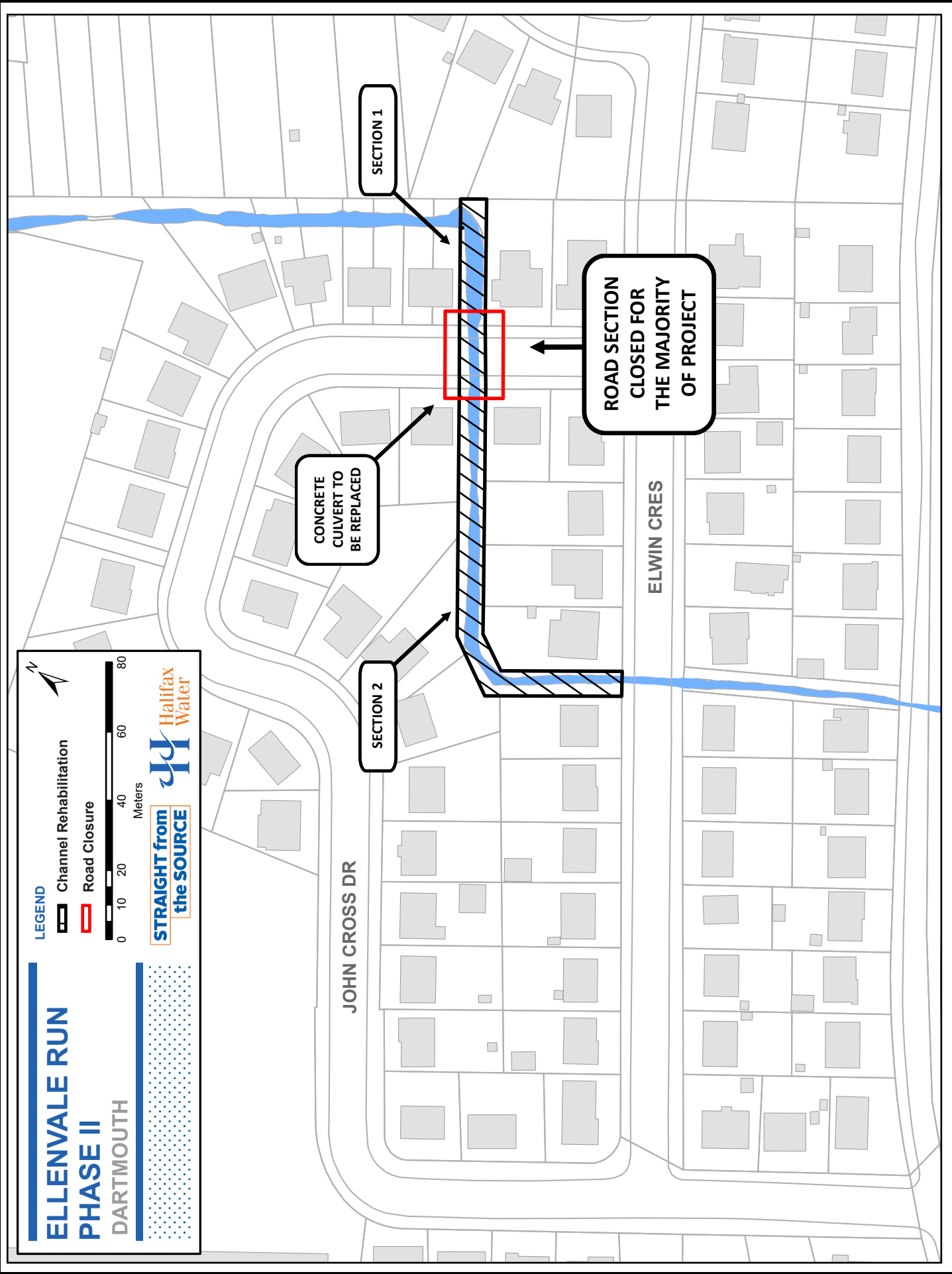
- Channel Rehabilitation
- Road Closure

Meters

0 10 20 40 60 80

**Halifax Water**

**STRAIGHT from the SOURCE**

SECTION 1

CONCRETE CULVERT TO BE REPLACED

SECTION 2

ROAD SECTION CLOSED FOR THE MAJORITY OF THE PROJECT

JOHN CROSS DR

ELWIN CRES