



Community Notice 4

Ellenvale Run Channel Rehabilitation - Phase 2

July 15, 2019

Project Overview

Stormwater flows through Ellenvale Run from Lemont Lake to Morris Lake. Phase 2 of this rehabilitation project focuses on replacement of the retaining walls along the 180 metre portion of Ellenvale Run between John Cross Drive and Elwin Crescent.

Project Update - Week July 15

Section 1 (see project map)

Monday, July 15 – Friday, July 19

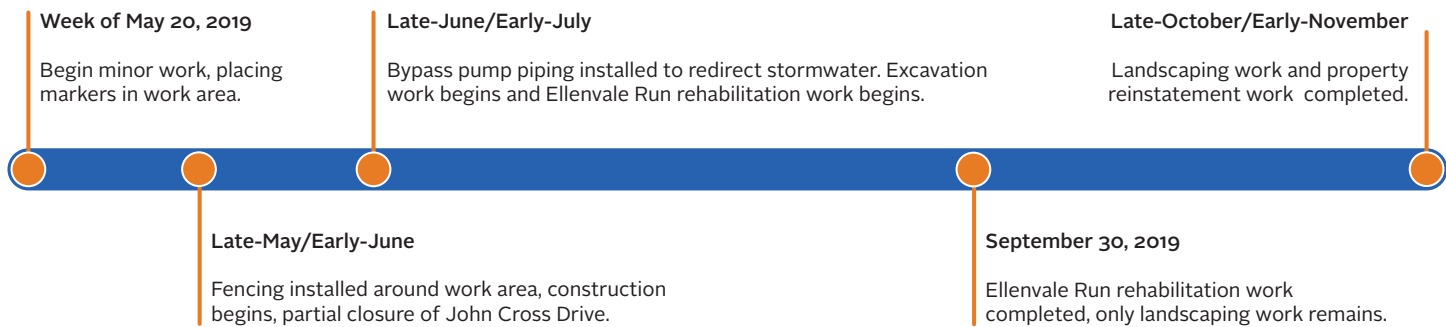
- Start by-pass pumping

Section 2 (see project map)

Monday, July 15 – Friday, July 19

- Start by-pass pumping

Project Timeframe



What to Expect

The contractor will have heavy equipment on the roads to facilitate stream reconstruction. Traffic will at times be delayed as temporary traffic control measures may be in place in the areas of work. Work will also be progressing within the channel. Residents can expect to see heavy equipment within the channel removing the existing walls.

Project Contacts

Halifax Water
Customer Care Centre
 Mon - Fri 8:00 AM - 8:00 PM
 902-420-9287
 customercare@halifaxwater.ca

Peter Maynard, P.Eng
Project Engineer
Halifax Water
 902-478-7350
 peterma@halifaxwater.ca

Bryan Naugle
President
Brycon Construction
 902-880-2500
 bryan@bryconconstruction.com

Evan Teasdale, P.Eng
Project Engineer
DesignPoint Engineering
 902-832-5597
 evan.teasdale@designpoint.ca

For Project Information & Updates, visit: halifaxwater.ca/project/ellenvale-run-rehabilitation-project-phase-2


**STRAIGHT from
the SOURCE**

ELLENVALE RUN

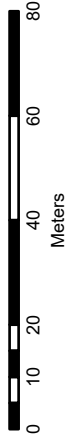
PHASE II

DARTMOUTH

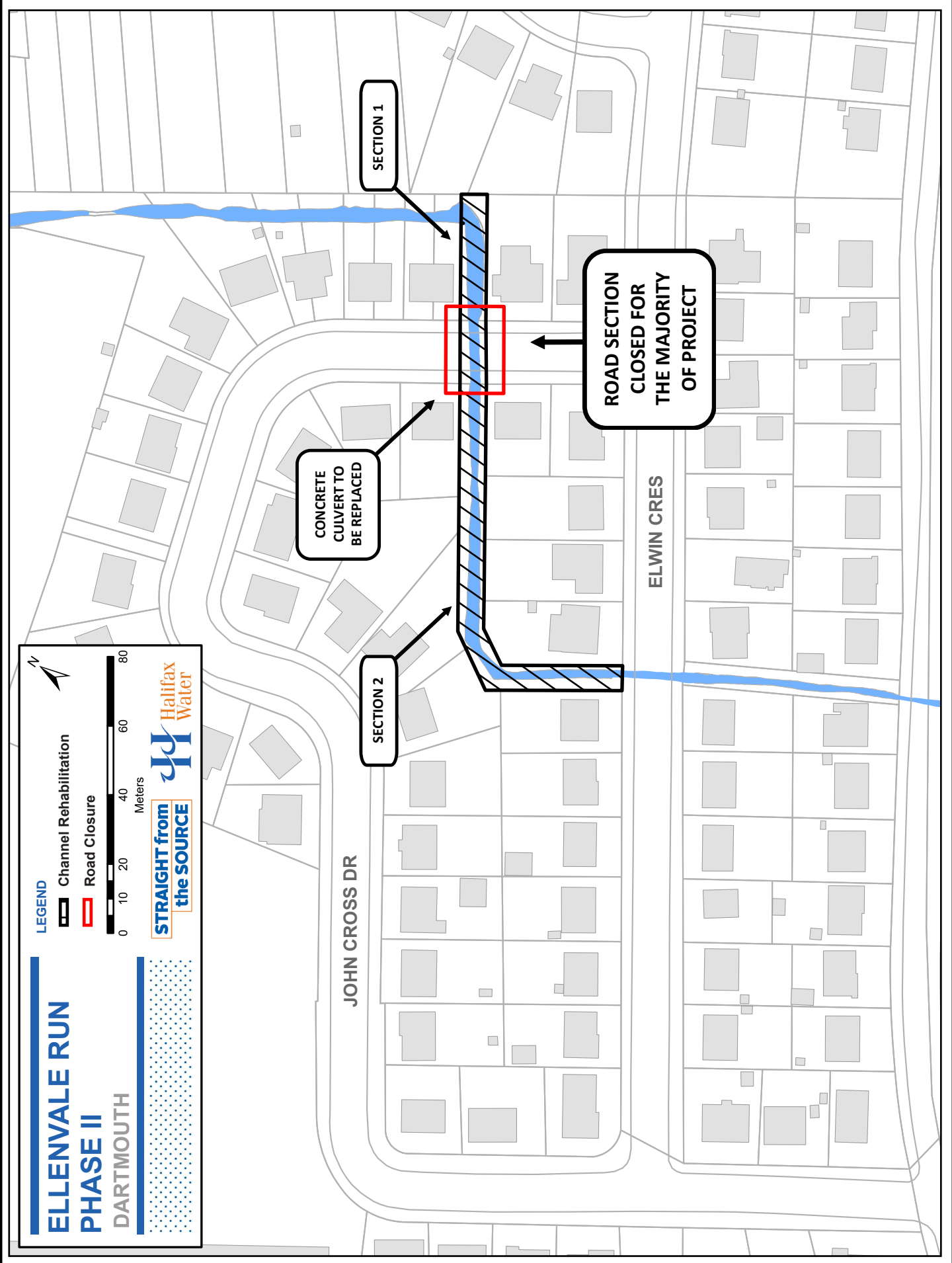
LEGEND

 Channel Rehabilitation

 Road Closure




**STRAIGHT from
the SOURCE**



The Ellenville Run Rehabilitation Project is being completed in multiple phases. This map shows the two active phases, and the recently completed Phase 1.

Community notices and updates will be distributed to the residents in close proximity to the various project phases as work in each phase proceeds.

Phase 1

(Shown in green) is approximately 99% complete. The majority of the work involved in Phase 1 was completed in Spring and Summer 2018.

Phase 2

(Shown in red) is the area discussed in this Community Notice. More information and project updates can be found here: halifaxwater.ca/project/ellenvale-run-rehabilitation-project-phase-2

Phase 3

(Shown in blue) is a part of the Wanda Lane, Tobin Drive & Ronald Court Infrastructure Upgrades & Rehabilitation Project. More information and project updates can be found here: halifaxwater.ca/project/wanda-lane-tobin-drive-ronald-court

