

Water Protection: A Multiple Barrier Approach

From the source to the tap and back again, Halifax Water ensures top quality water is delivered to our customers. To protect its water supplies, including Lake Major, Halifax Water uses a multi-barrier approach that involves a system of checks and balances from the source to the tap (<https://www.halifax.ca/home-property/halifax-water/water-services>).

Following the process, outlined in *Developing a Municipal Source Water Protection Plan: A Guide for Water Utilities and Municipalities*, achieves the goals set out in the *Drinking Water Strategy for Nova Scotia*. Each step in the process has been illustrated and described in previous issues of the Lake Major Newsletter. For copies of previous newsletters please contact us.

It is through the multiple barrier approach that Halifax Water staff can confidently ensure that water quality standards are maintained to the highest level for the benefit of the North Preston, Cole Harbour, Dartmouth, Eastern Passage and Westphal communities and all customers served by Halifax Water.

On the back page of this newsletter, we focus on the last step (**Step 6**) of the multiple barrier approach; i.e.; **Emergency Management Plans**.

Halifax Water on Screen

To see the work and some of the faces of the dedicated Halifax Water staff performing this work, we invite you to visit our

YouTube Channel link at:

<https://www.youtube.com/channel/UC4SuO2XqgECbp2qNFK7f7kQ>

The Lake Major Watershed Newsletter is a Halifax Water publication.

Visit: www.halifaxwater.ca
Phone: Customer Service at 902-420-9287
Email: Cust_Inq@halifaxwater.ca
Write: P.O. Box 8388 RPO CSC, Halifax, NS B3K 5M1

Lake Major Dam Replacement Update

As part of the requirement for the Environmental Assessment, a public information session was held in November 2016. The session had a large turnout where members of the public were able to ask questions and get answers directly from Halifax Water staff, the dam design consultant and the environmental consultant that completed the study. The Environmental Assessment for the project was reviewed and approved by the Minister of Environment in February 2017.

Halifax Water has since completed the detailed design for the structure and the project was publicly tendered in April 2017. The project is currently in the process of obtaining approval from the Nova Scotia Environment Department for construction and operation of the dam.



“The Shed”

Water is a precious resource. Ensuring that we preserve and conserve this resource, and educate customers, is important to Halifax Water. In order to raise awareness around the full water cycle (water, wastewater and stormwater), Halifax Water is enhancing its community outreach program with the introduction of “The Shed”. The Shed, which is towed by a specially Branded Halifax Water truck, is a mobile information station that has informative message boards, videos, interactive games such as a water taste test (bottle vs. tap), a Pop Up Park, and of course, tap water available.

The Shed is going out into the community and interacting with our customers to raise awareness about the services Halifax Water provides and the importance of the full water cycle (from the source to the tap and back again). The Shed is making appearances at various events throughout the municipality this summer. If you see The Shed, please drop by, have a cool drink of tap water, watch a few videos and chat with the helpful staff.

Let’s work together to raise awareness around water conservation and protection of this precious resource.



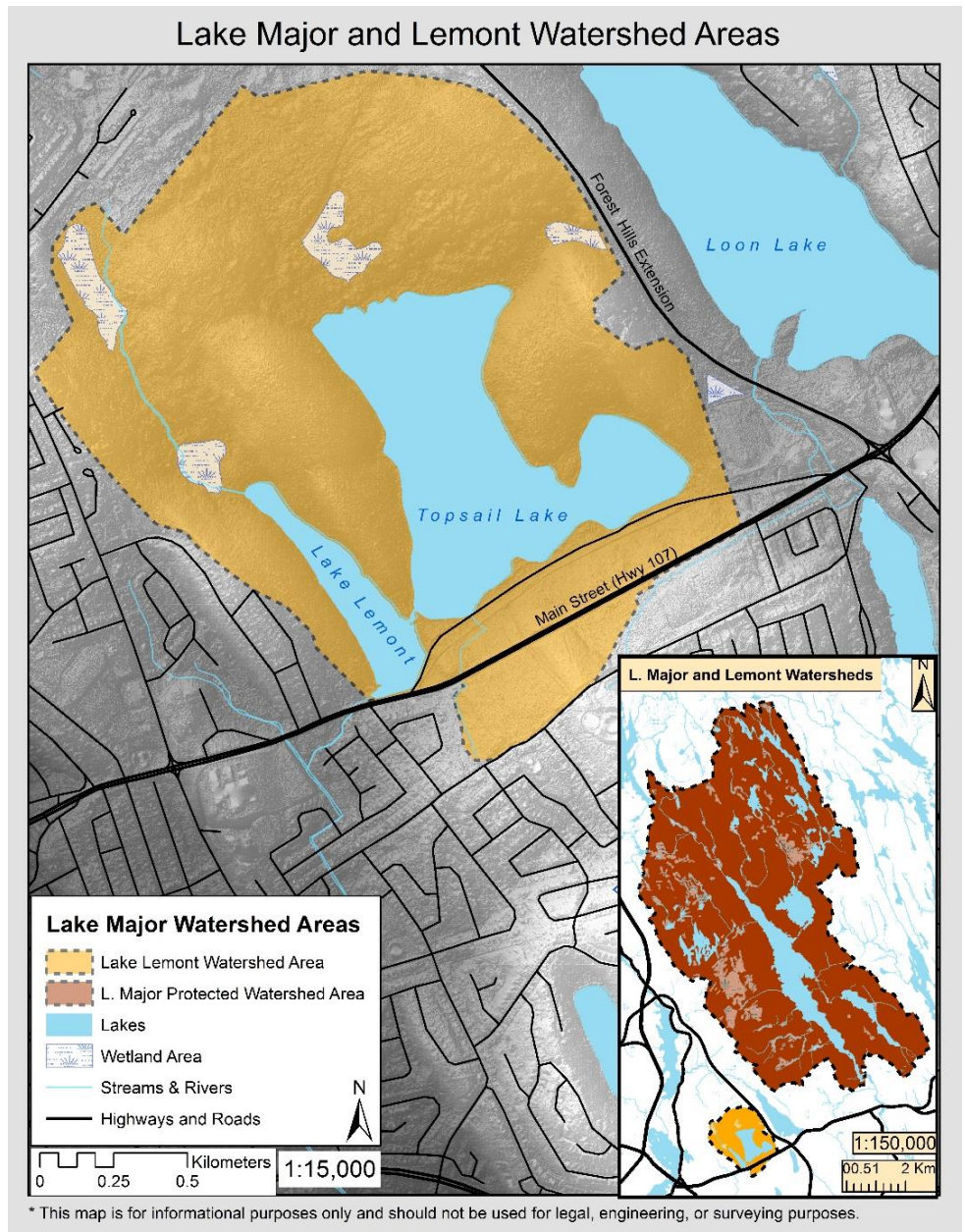
Step Six: Emergency Management Plans

Safe and reliable drinking water is critical to the sustainability of communities everywhere. In recognition of this, Halifax Water maintains an Emergency Management Plan (EMP), as required by the provincial Emergency Management Act "to mitigate the effects of an emergency or disaster and to provide for the safety, health or welfare of the civil population and the protection of property in the event of such an occurrence".

Implementing an EMP can save lives, reduce risk to public health, enhance system security, and minimize property damage. Halifax Water's EMP provides the structure for staff and emergency personnel and the steps required to respond to water and wastewater /stormwater incidents.

An Incident Command System (ICS) is also put into play during an emergency. An ICS provides the framework to integrate the facilities, equipment, personnel, procedures and communications that must work together during an emergency.

Halifax Water continues to train employees involved in emergency response and maintains readiness by exercising the ICS principles when responding to minor and major incidents. Staff also conduct internal response exercises and



participate in regional exercises with other municipal, provincial and federal agencies on a regular basis.

In the event of an emergency at the Lake Major Water Supply Plant, a decision may be made by senior management to activate emergency water supply sources while the event is being tended to.

The Lake Lemont emergency backup water supply area includes both Lake Lemont and Topsail Lake, which are located between the Forest Hills Parkway and Main Street (see Map).

Fortunately, the emergency supply has not been required since the Lake Major water treatment and distribution system began operating in 1998.