

## What does Halifax Water do to reduce Inflow & Infiltration?

Halifax Water works to improve public infrastructure by:

- Repairing pipes and manholes;
- Maintaining pump stations;
- Upgrading Wastewater Treatment Facilities.

## What can you do?

Look for inflow & infiltration sources:

- CCTV video your lateral to identify damage;
- Get Halifax Water to help identify sources;
- Disconnect stormwater connections from the wastewater system;
- Repair leaking pipes and connections.



**STRAIGHT from  
the SOURCE**



**STRAIGHT from  
the SOURCE**

Contact us for more information:

**Inflow@halifaxwater.ca**  
**902.420.9287**



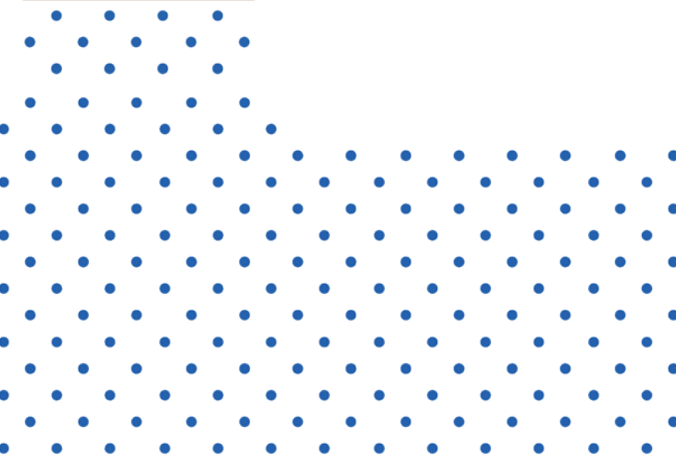
 /HalifaxWater

 @HalifaxWater

[www.HalifaxWater.ca](http://www.HalifaxWater.ca)

# Reduce Inflow & Infiltration

What you need to  
do as a property owner.

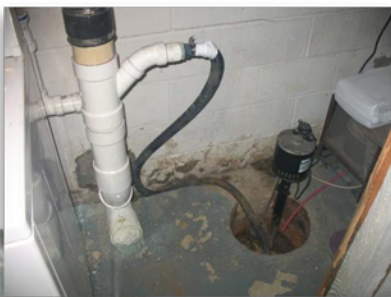


## What is Inflow & Infiltration?

Inflow and infiltration (I&I) occurs when stormwater enters the Wastewater System from rainfall, groundwater, snow melt and surface water runoff.

Wastewater systems are only designed to carry wastewater from fixtures such as toilets, sinks, washers and showers.

Inflow occurs when stormwater drains are connected to the wastewater system



Infiltration occurs when damaged and leaky pipes allow water into the system.



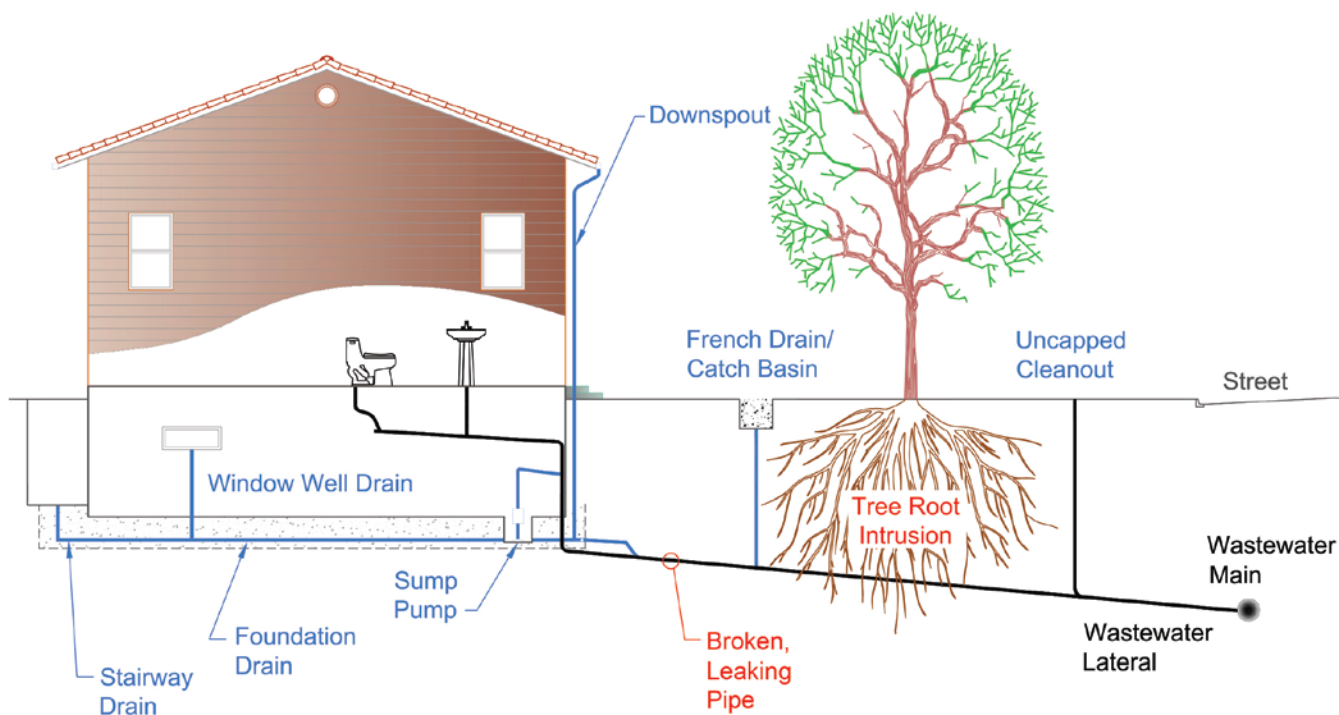
Inflow and infiltration can overwhelm the wastewater system which can lead to:

- Increased customer costs;
- Wastewater releases;
- Impacts to human health and the environment;
- Flooded basements.



## Private Property Sources of Inflow & Infiltration

Stormwater could be entering the Wastewater System from direct connections (inflow) or from leaking infrastructure (infiltration) as shown below.



### Redirect drains connected to the wastewater system for:

- Sump pumps and pits;
- Downspouts;
- Foundation and yard drains;
- Exterior stairwell and window well drains.

### Repair damaged and leaking pipes:

- Cleanout caps;
- Laterals with damage and roots.

### Possible locations to discharge stormwater:

- Onto your own property (away from your foundation);
- To a garden or a soakaway pit;
- Towards a body of water (e.g. lakes, streams);
- To Halifax Water's stormwater system (ditch or underground pipe.)

